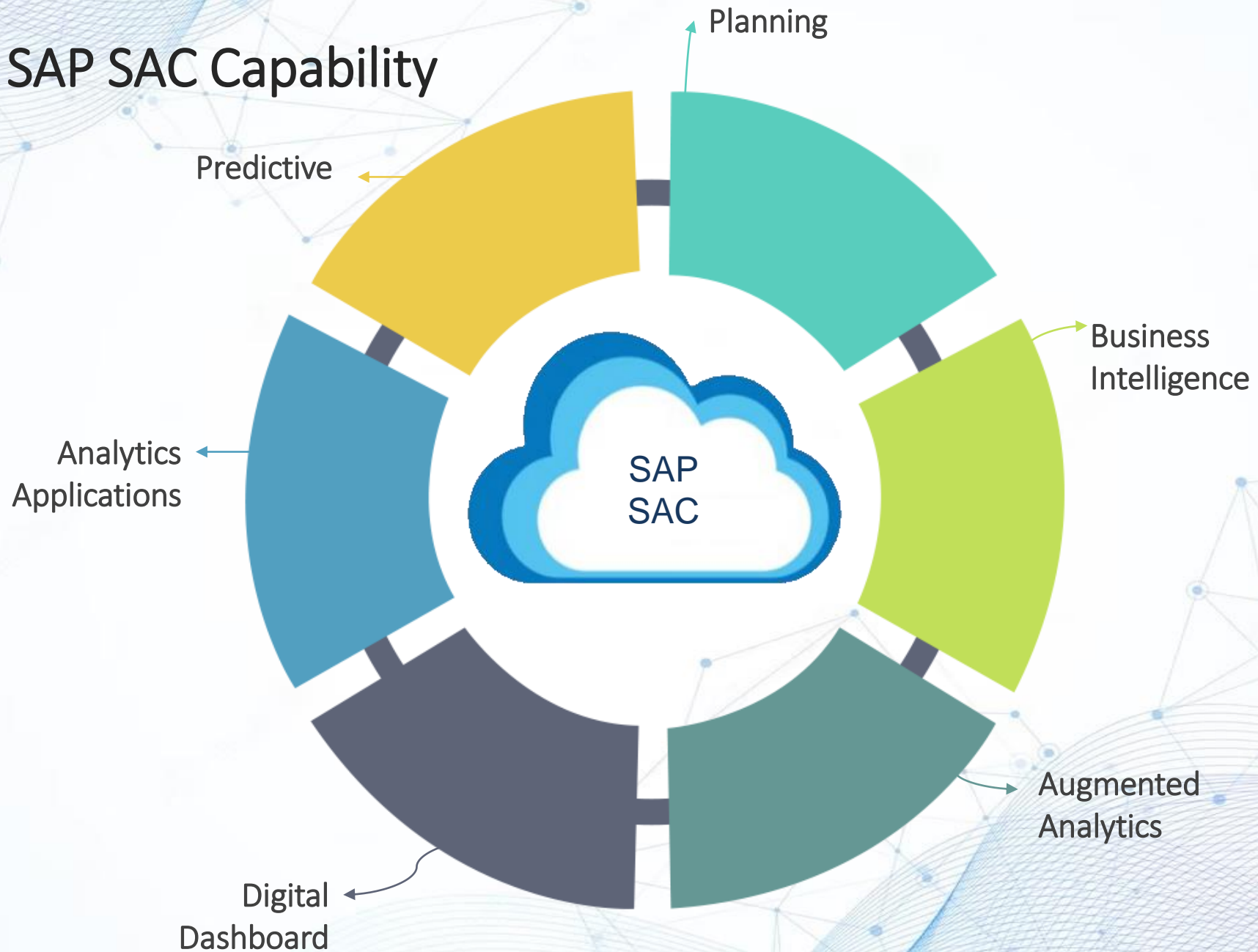


# TECNICS SAP SAC Capability



# ANALYTICS APPLICATIONS

- ✓ Business Intelligence of SAC focus mainly on below points.
- ✓ Data Acquisition (Collecting and feeding into the system)
- ✓ Data Visualization (Creating helpful reports)
- ✓ Publishing (releasing the reports for decision making)

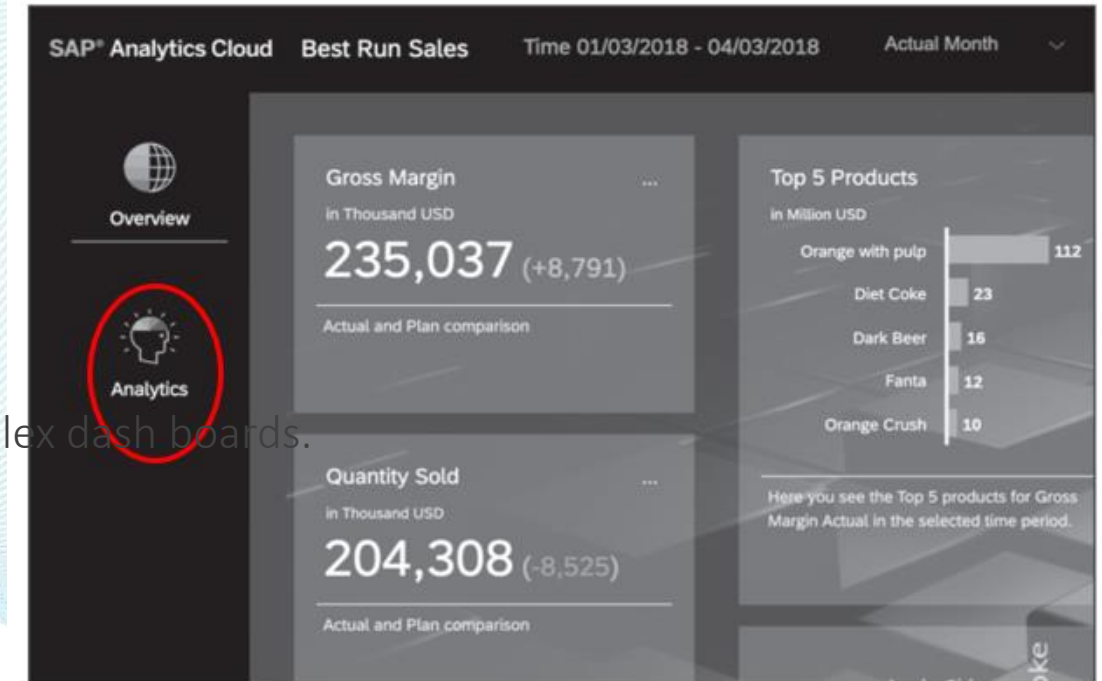
Apart from above functionalities Digital Dash board is also a key feature of SAC which transforms executives meetings with interactive discussions based on real data.



# BUSINESS INTELLIGENCE

Analytics designer of the SAC has capability to create sophisticated Analytic applications.

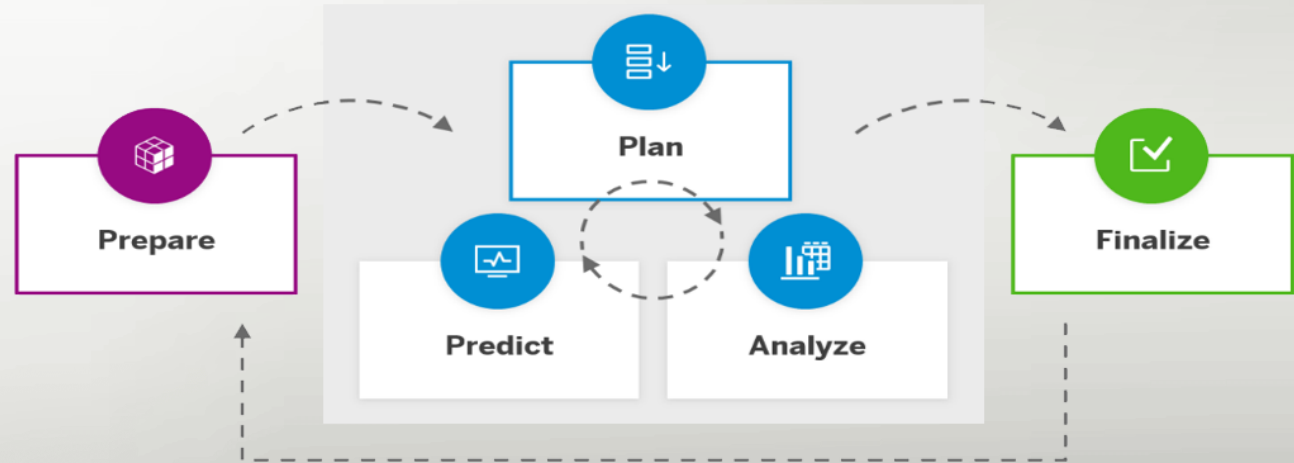
- ✓ Centrally Governable Analytic Content
- ✓ Analytic application offers a higher degree of freedom to complex dash boards.
- ✓ Business users can interact with applications like Stories.



# PLANNING

Effective Planning is the key for success. Planning in SAC consists tools for end to Business Planning

1. Kick starting forecasts with predictive features.
2. Build custom planning applications.
3. Usage of powerful VDT (Value Driver Tree) for Planning application.
4. Data entry, Calendar tasks, version management, Powerful scripted calculations etc.
5. Collaboration application to collaborate with in the team and other stake holders.

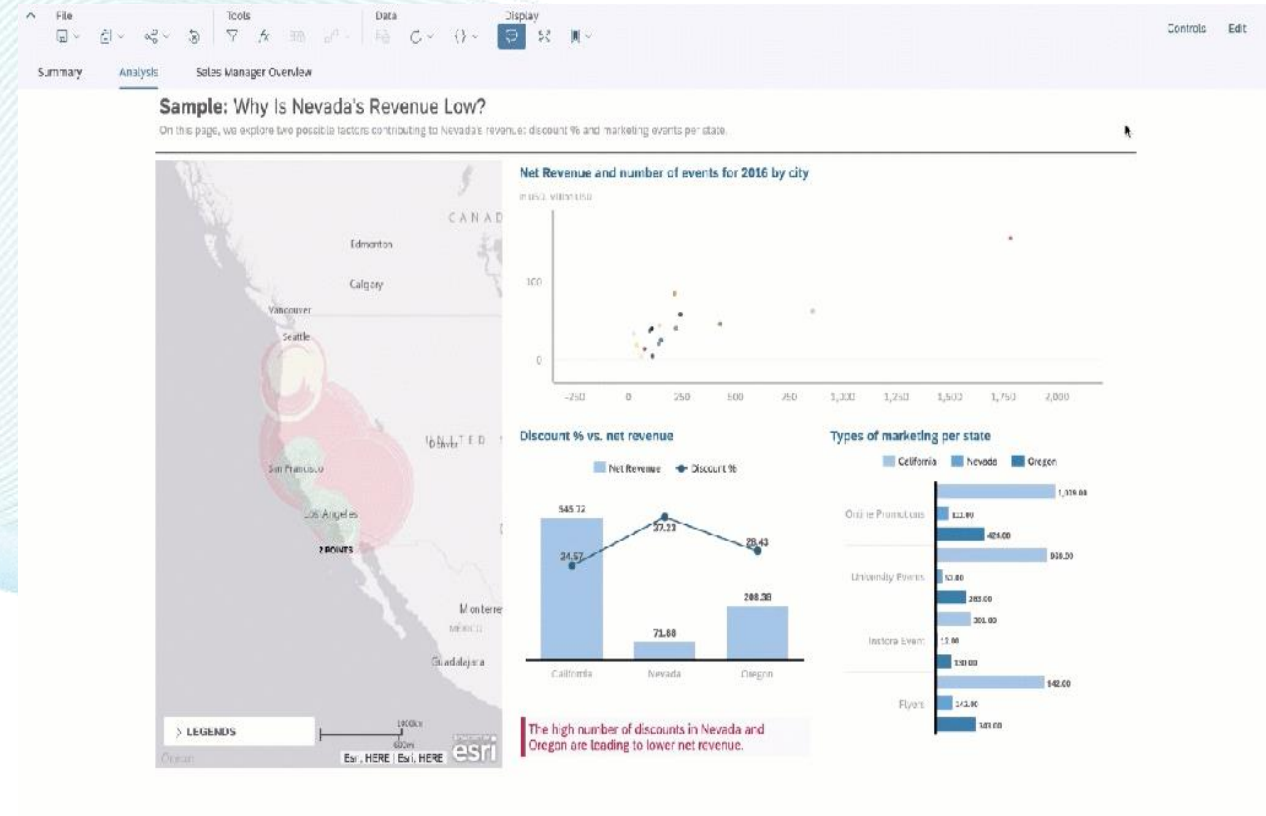


# AUGMENTED ANALYTICS

Augmented Analytics facilitates the business users with automated insights powered by Machine learning.

- ✓ Smart Insights
- ✓ Search to Insight
- ✓ Smart Discovery

Using above features can help business like instant answers to your questions, Content creation easier with power of NLP and unknown relationships in the data.

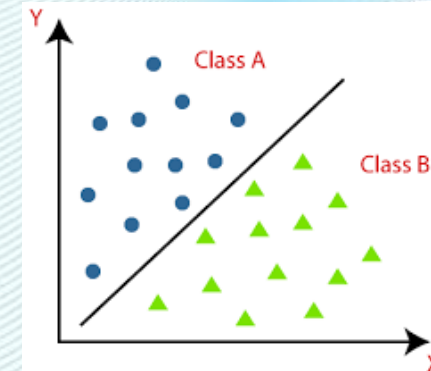
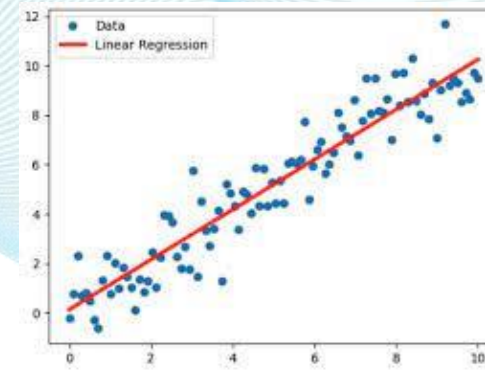
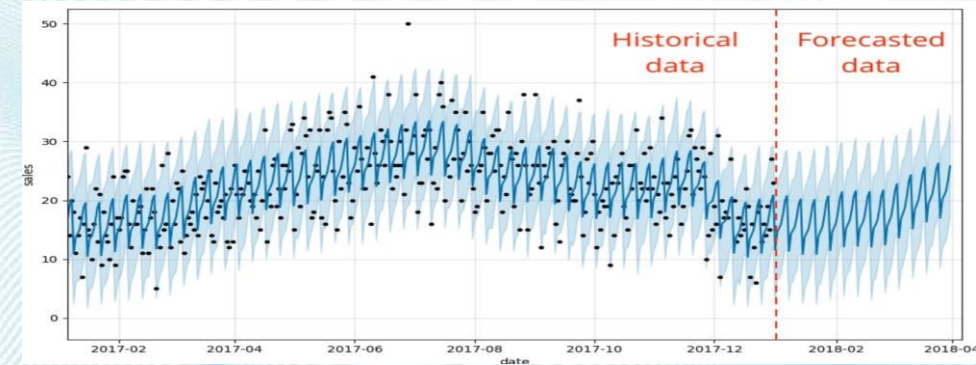


# PREDICTIVE Analytics

The predictive analytics area contains both manual and automated processes, such as determining what the key influencers are for a specific dimension, or utilizing machine learning to identify trends not visible to the human eye.

1. Classification
2. Regression
3. Time Series

Generates predictions likelihood of future event happening, based on business value, values of a business value over a time at certain granularity.



# Case Study

## SAP Corporate reporting

### Applications

---

- ✓ SAP S/4 HANA
- ✓ Salesforce
- ✓ SAP IBP

### Tools

---

- ✓ SAP Analytics Cloud
- ✓ SAC Planning
- ✓ Analysis Office
- ✓ SAP BW/4 HANA
- ✓ SAP BPC
- ✓ SAP HANA CDS

### Process/Data

---

- ✓ Actual vs Budget, Rolling Forecast, Variance analysis reports.
- ✓ RTR Accounts Payables, Receivables, GL accounts, Hierarchies, Profitability
- ✓ Procure to Pay (Purchase Orders, Invoices)
- ✓ Plan to Fulfill (Deliveries, Planning, Shipments)

### Challenges Addressed:

- ✓ Improve Planning and Forecasting accuracy
- ✓ Integrated Planning across the organization avoiding Planning Silos
- ✓ Replacement of out dated legacy IT environments

### Accomplishments

---

- ✓ Corporate Dash Board (SAC)
- ✓ Operational Reporting – Analysis office reports
- ✓ VDT(Value Driver Tree),What-IF analysis (SAC, BPC)



# Case Study

## Month End closure and reporting

### Applications

---

- ✓ SAP S4 HANA

### Tools

---

- ✓ SAP Analytics Cloud
- ✓ SAP BPC
- ✓ SAP BW/4 HANA
- ✓ HANA CDS

### Process/Data

---

- ✓ SAP Analytics Cloud for all reporting needs Dashboards, Detailed drilldowns and adhoc analysis
- ✓ BW4 HANA was implemented to automate the data integration and harmonization
- ✓ Processing SAP and non SAP data in a unified manner

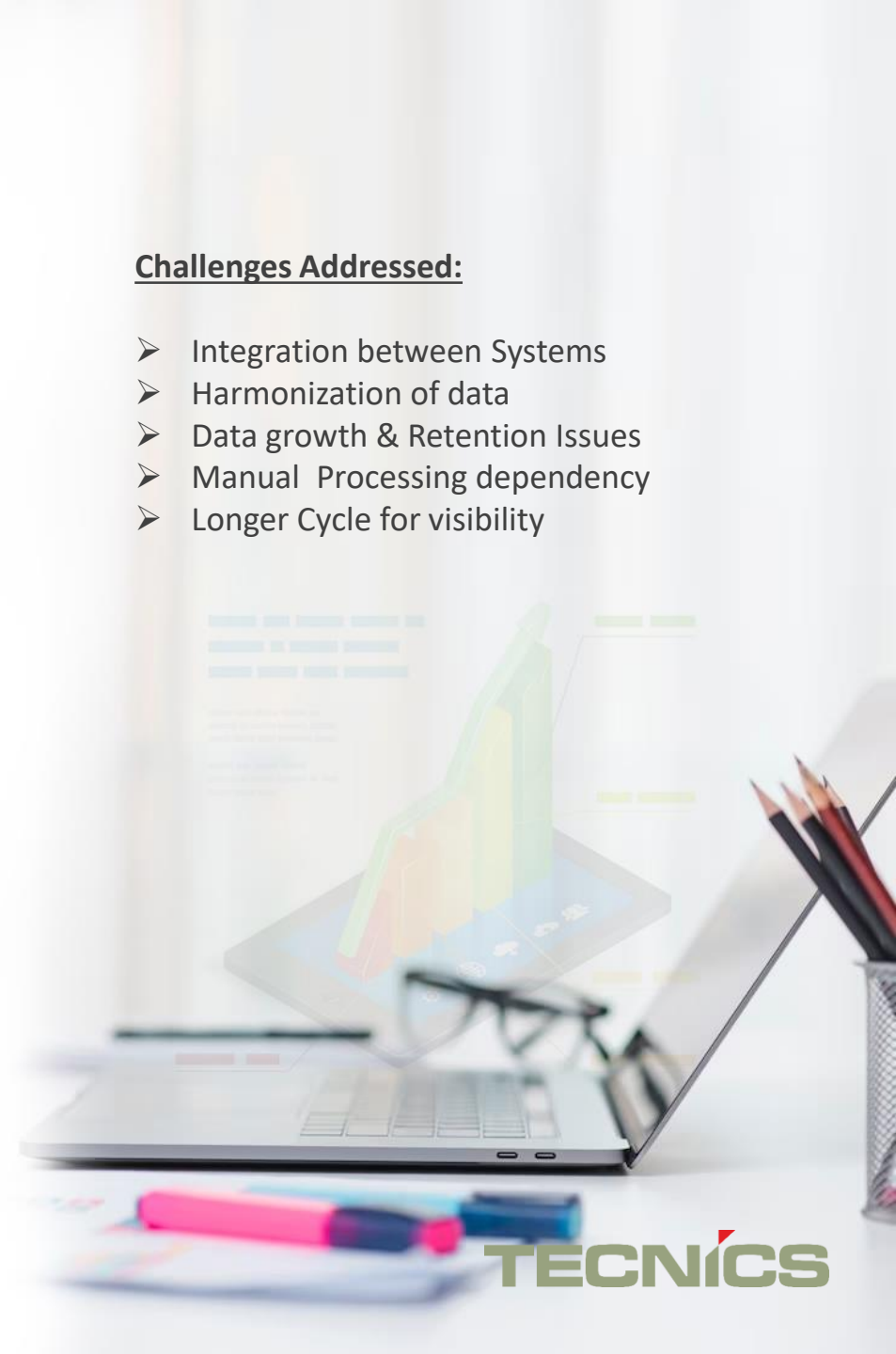
### Accomplishments

---

- ✓ Automated Financial Analysis and Profitability Analysis to cater to top management.
- ✓ Integration between systems and harmonization of data
- ✓ Reduced manual dependencies on data processing.
- ✓ Addressed Data growth and Retention issues.

### Challenges Addressed:

- Integration between Systems
- Harmonization of data
- Data growth & Retention Issues
- Manual Processing dependency
- Longer Cycle for visibility





# Case Study

## Data Unification and Integration using SAP Datasphere

### Applications

---

- ✓ SAP S4 HANA with FICO, SD, MM, Logistics, Amazon Redshift and Google Big query

### Tools

---

- ✓ SAP Analytics Cloud
- ✓ SAP BW/4 HANA
- ✓ SAP Datasphere (POC)
- ✓ HANA CDS

### Process/Data

---

- ✓ SAP Datasphere performed real time integration and unification across cloud and on-premise systems.
- ✓ Corporate Data Governance policies are implemented.

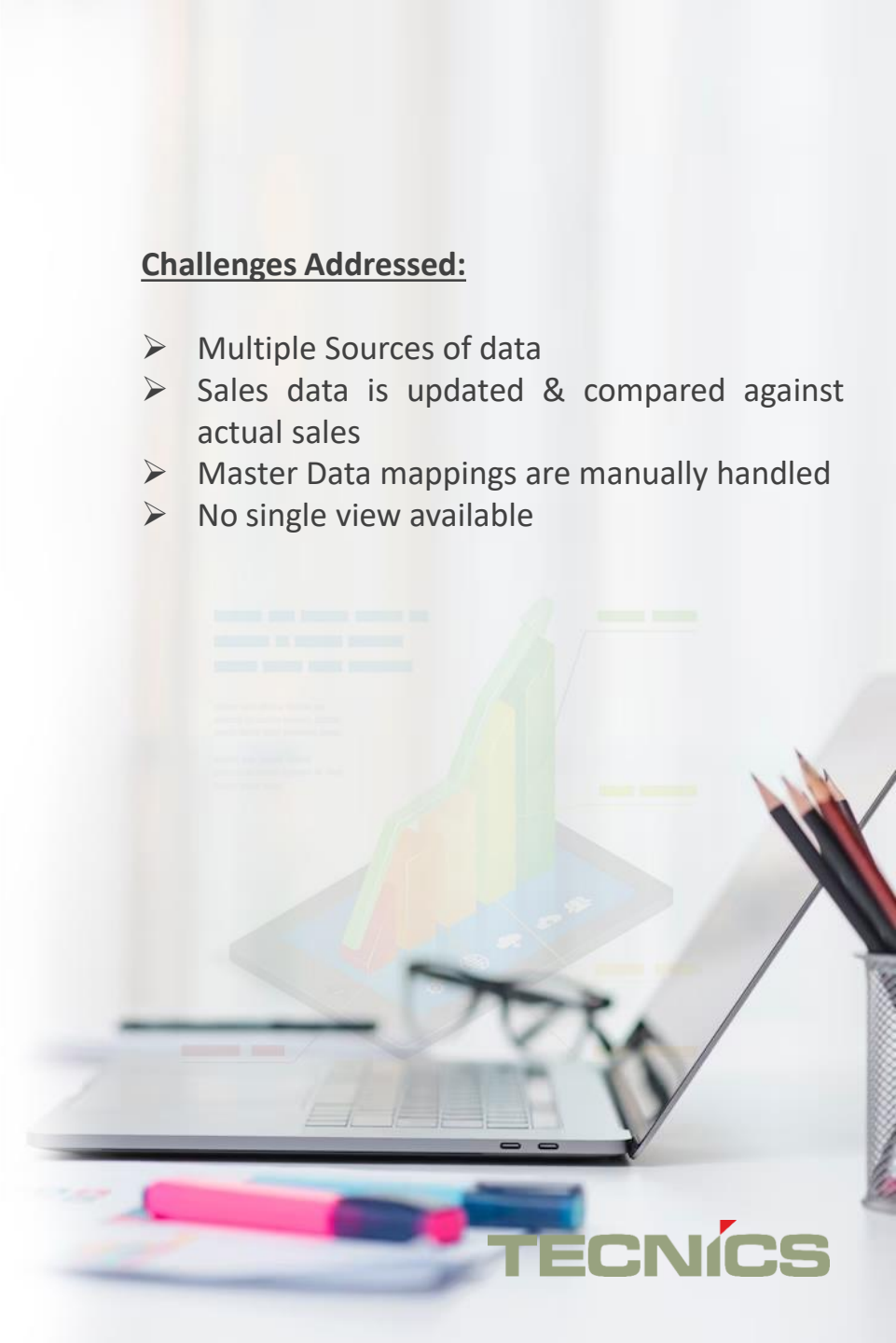
### Accomplishments

---

- ✓ Harmonized data from multiple data sources
- ✓ Availability of master data
- ✓ Easy access to data for processing of information in SAC
- ✓ Availability of Insights.

### Challenges Addressed:

- Multiple Sources of data
- Sales data is updated & compared against actual sales
- Master Data mappings are manually handled
- No single view available



# Case Study

## Data Insights

### Applications

---

- ✓ SAP S4 HANA with FICO, SD, MM, Logistics

### Tools

---

- ✓ SAP Analytics Cloud
- ✓ SAP Data Intelligence

### Process/Data

---

- ✓ Built data pipelines to manage, share and distribute data among various stakeholders using SAP Data Intelligence tools.
- ✓ Integrated SAP Analytics Cloud as a layer on top of SAP Data Intelligence tools connecting with built-in connectors to data sources
- ✓ Designed reports and self-service dashboards based on department requirements in areas of HR, Management Memos, Service Organizations etc.
- ✓ Created a baseline standard report managed by the centralized IT Team and allowed for variance to suit different departmental needs and requirements.

### Accomplishments

---

- ✓ Single view for global spend across Organization.
- ✓ Provide actionable insights
- ✓ Accurately Identify all potentially risky transactions
- ✓ Implement action plan for reducing the compliance risk.

### Challenges Addressed:

- Multiple Sources of data
- Sales data is updated & compared against actual sales
- Master Data mappings are manually handled
- No single view available



# Case Study

## Enterprise Analytics

### Applications

---

- ✓ SAP S/4 HANA, SAP SuccessFactors, SAP ARIBA
- ✓ NON SAP Systems – IBM Maximo, Food

### Tools

---

- ✓ SAP Analytics Cloud (Predictive and Augmented Analytics)
- ✓ SAP Embedded Analytics, SAP Fiori
- ✓ SAP BW/4 HANA
- ✓ SAP DWC

### Process/Data

---

- ✓ Global P&L report
- ✓ Plan to Report (Financials ->Payables, Receivables, GL, Hierarchies, Fund & Grant Accounting)
- ✓ Procure to Pay (Requisitions, Purchase Orders, Invoices)

### Accomplishments

---

- ✓ Business dash boards with real time and relevant data ad hoc querying and interactive drilling

### Challenges Addressed:

- Classification model to predict lead being converted to an opportunity
- Time Series Forecasting
- Customer discovery and segmentation
- Churn analysis and customer retention



A low-angle, upward-looking photograph of several modern skyscrapers with glass facades, set against a clear blue sky. The perspective creates a sense of height and architectural grandeur. The buildings are dark blue and grey, with many windows visible. The overall color palette is dominated by blues and greys, with a touch of red in the logo.

**thank you**  
**TECNICS**

